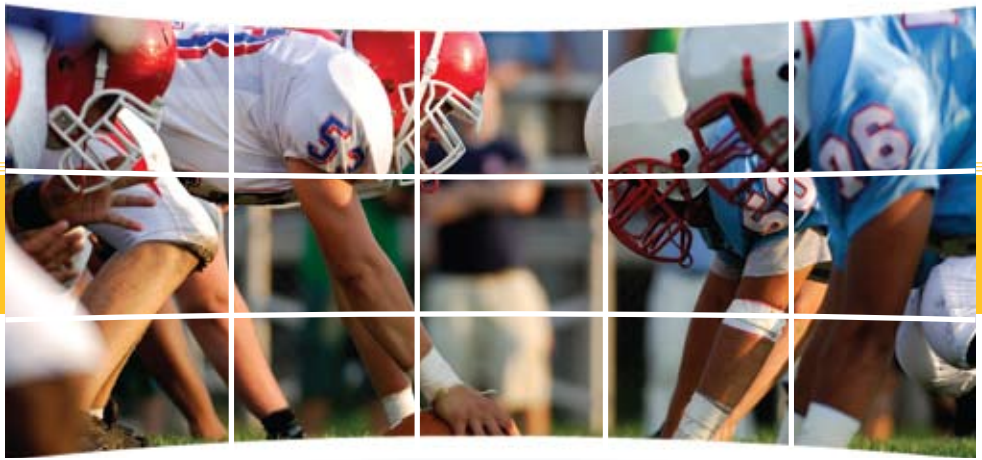




Osprey-210

Video Capture Card

ViewCast - world class streaming hardware and software trusted by video professionals since 1994.



Quick Facts

- Increased integration flexibility by allowing multiple cards to operate within a single PC
- Captures full frame video at 30 frames per second for maximum quality
- Supports most popular video and audio APIs
- Monitoring of audio capture without impacting rich media delivery
- Enhanced sound capture at lower bit rates
- Drivers available for Microsoft® Windows® operating systems. See the Driver Downloads page for the latest available drivers.

Osprey -210

Built on the Board that Started It All

The Osprey-210 starts with the legendary quality and performance of the Osprey-100 and adds on-board analog stereo audio inputs. It's an excellent choice for low-cost systems where one video input and one unbalanced audio input is sufficient.

And, like all Osprey cards, you can plug in additional Osprey-210 cards or mix-and-match with other Osprey cards whenever you need additional video and audio channels. It's perfect for budget-conscious customers who need reliable video and audio capture performance at an attractive price.

Osprey-210 inputs include:

- Composite Video (BNC connector)
- S-Video
- Unbalanced stereo audio input

The Osprey-210 ships with a breakout cable for video and audio inputs.



Features:

- Multiple Osprey-210's per chassis
- Mix-n-match with other Osprey cards
- BNC composite video input
- Audio Loop-back output via rear-panel headphone jack
- Driver supports Closed Caption extraction
- Compatible with Osprey SimulStream®

Specifications

- Video Input: Composite (BNC), S-Video
- Audio Input: Unbalanced Stereo (2x RCA)
- Audio Output: Unbalanced Stereo Line Level (3.5mm)
- 5V PCI 2.1 Complaint
- Windows Server® 2003 and Windows XP®

Osprey 210

