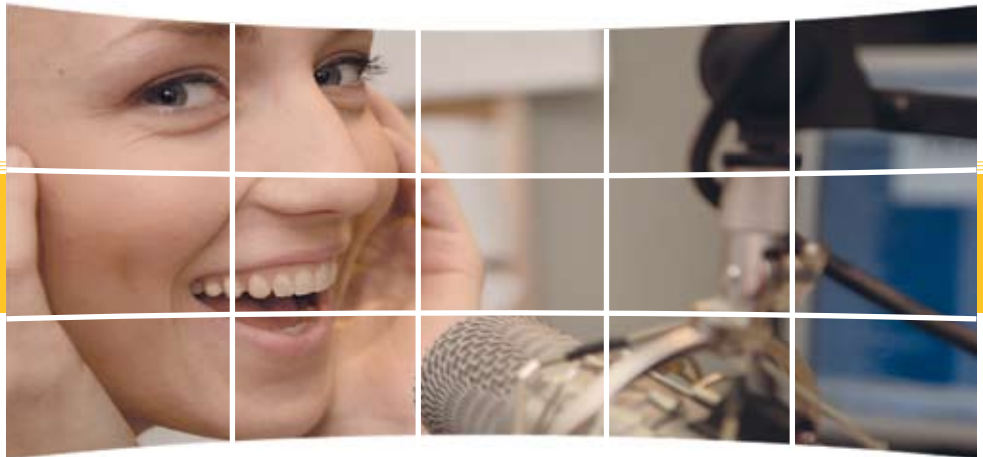


**ViewCast** - world class streaming hardware and software trusted by video professionals since 1994.



## Ideal Users and Applications

### Fits a Wide Variety of User Types and Applications

EASE is perfect for creating professional video productions that take advantage of webcasting, including for **online training, distance learning, corporate communications**, and other **business applications**. It's well-suited for **DVD authoring** and on-demand content creation applications for broadcasters, government agencies and enterprises and other business video content via DVD disks and video over IP networks.

# Osprey EASE

**A complete video capture, editing, streaming and DVD authoring tool for business video creators and multimedia producers**

Osprey EASE deftly combines the Osprey-300 video capture card with and Adobe's award-winning Premiere Elements video editing and authoring software. Together they create into a powerful video capture, editing, streaming, and DVD authoring tool at an attractive price. This is a comprehensive array of products that successfully beats the competition by meeting many challenging needs at once.

EASE offers business video producers a complete editing and authoring package for accomplishing end-to-end video production. Multimedia producers enjoy the simplicity of EASE because it competently combines all the necessary video production elements into one powerful but easy-to-use tool!

### Professional video productions without minimal investing a lot of money.

With Start with any popular a commercial DV camera, a desktop PC with an available PCI™ or PCI-X™ expansion slot, and a DVD burner. Osprey EASE is an excellent package for handling a variety of important functions, such as:

- *The industry's fastest DV port for your camera, while adding analog audio and video capture ports so you can add in video from your VCR or DVD players, from analog cameras, or any industry-standard analog source*

- *Adobe® Premiere Elements software to edit your captured footage and capturing; editing add special effects and titles*
- *Deliver your professional-quality videos by saving to DVD discs or any storage device*

EASE ensures simultaneous capture and real-time video streaming through the analog port and direct capture from DV devices into Premiere Elements! With the OHCI capability of the Osprey-300, you have complete control over your DV devices: Stop, rewind, and record from your desktop.

### Osprey EASE includes:

#### Osprey-300

*The ideal video capture card with analog streaming capability when utilized with Windows Media® Encoder or other encoding applications. It includes an OHCI compliant DV (FireWire®) port providing DV control and capture using standard editing software.*

#### Windows Media Encoder

*Deliver audio and video quality at any bit rate, with features designed to provide superior quality at dial-up rates, and home-theater-like experiences over broadband connections or for download and play.*

#### Adobe Premiere Elements

*A highly effective but user-friendly video editing and DVD burning application.*

#### RealProducer® Basic

*Create and stream video in RealAudio® and RealVideo® formats over IP networks.*

## Osprey EASE

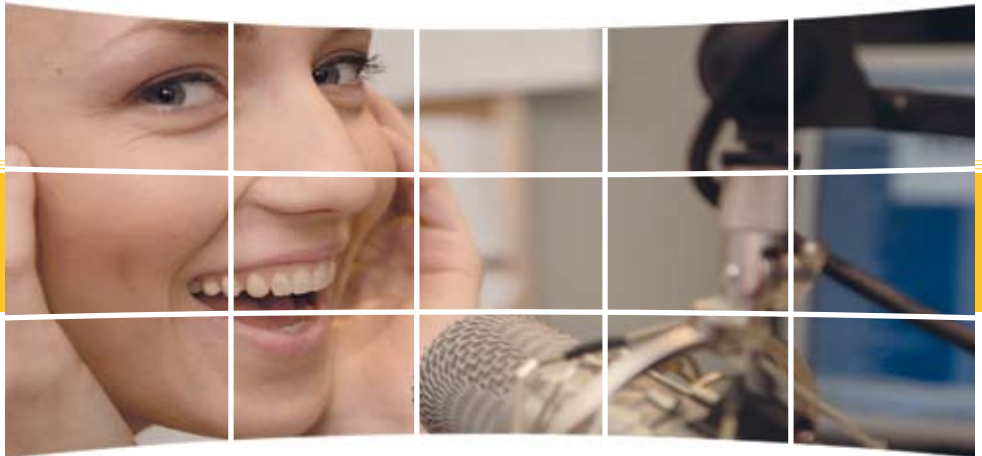


### Rock-Solid Stability –

*Legendary Osprey reliability means you can count on rock-solid performance, day in and day out.*



**ViewCast** - world class streaming hardware and software trusted by video professionals since 1994.



## Key Attributes

- DV Camera and Deck Control via DV port
- Video capture from analog devices into Windows Media, RealVideo & AVI formats
- Real-time video streaming from analog video devices into Windows Media & RealVideo formats
- Capture from DV devices directly into Adobe Premiere Elements
- Automatically transfer all footage from DV devices
- Output edited video to tape or stream in Windows Media and RealVideo
- WHQL-Certified, WDM/AVStream driver
- Cascadable architecture allows for multiple Osprey EASE's per PC chassis
- Advanced DMA for ultra-high performance (full 30 fps)
- Hardware audio gain control for analog audio inputs
- Closed Caption extraction
- Hardware Cropping and Bitmap Overlay
- AVI or extended AVI capture for use with the most popular third-party editing and streaming software applications (e.g., Adobe Premiere Pro, Flash®, RealProducer Basic 10, Windows Media Encoder 9)
- PCI-X compatible
- Breakout cable included for video and audio inputs
- Adobe Premiere Elements included
- Option: Rackmount breakout panel for audio and video input
- Osprey SimulStream Ready (analog only)

## Specifications

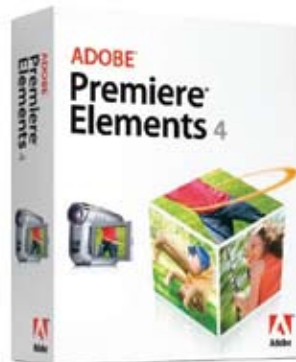
- Video Input: Composite (BNC), S-Video
- 1394 I/O: IEEE 1394a, 1394b
- Audio Input: Balanced stereo (2 x XLR), Unbalanced stereo (2 x RCA)
- Audio Output: Unbalanced stereo line level (3.5 mm) (Includes Loop out)
- 64-bit/66-MHz PCI Interface
- 32-bit/33-MHz PCI Compatible
- 3.3-V PCI 2.3 compliant
- Supports all popular Microsoft® Windows® operating systems with compatible Osprey driver

## Professional Features for Broadcasters

Osprey EASE features ViewCast's Osprey-300 video capture card. The Osprey-300 is a proven analog video capture and streaming card that includes an OHCI compliant DV (FireWire) port. Using Adobe Premiere Elements editing software and a DV device (e.g., DV camera or DV deck), you can capture, control, edit, and stream professional quality videos any time you want. Using the FireWire port

is perfect for taking your videos back out to tape.

- The Osprey-300 also features PCI-X bus compatibility, providing high-performance/high-bandwidth data transfer – a MUST for capturing full-resolution DVD-quality video. The Osprey-300 hardware is backward-compatible with the standard PCI bus interface. Edge out the competition by elevating your business videos to the highest professional level. Make it happen today!



**Osprey-300**  
Video Capture Card

## Edit and author with a professional touch!

- Automatic timeline adjustment when editing video
- Smart "How-To" guides
- Edit in real time
- Add special effects; slow motion, warping, and picture-in-picture capability
- Create titles and credits, put text and graphics in motion
- Add scene transitions
- Overlay text with effects; shadows, glows, and other effects to text
- Burn custom DVD's
- Create professional-looking DVD menu
- Create scene indexes automatically
- Standard (4:3) or widescreen (16:9) support
- FireWire and Streaming Capture Card Included Form factor: Standard PCI short Card (6.6" x 4.2")



© 2008 ViewCast Corporation. ViewCast, Niagara, Osprey, SimulStream, GoStream, EZStream and Niagara SCX are registered trademarks of ViewCast Corporation or its subsidiaries. All other trademarks are the property of their respective owners. Product specifications and availability may change without notice. Osprey-EASE-2pg

USA | 3701 W. Plano Parkway, Suite 300 | Plano, Texas 75075-7840 | 972-488-7200 | 800-540-4119  
UK | Worting House Church Lane | Basingstoke Hampshire RG23 8PX U.K. | +44 1256 345610

[www.viewcast.com](http://www.viewcast.com)